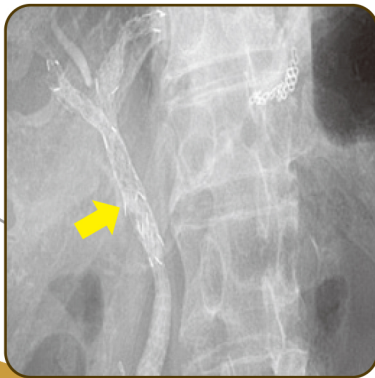
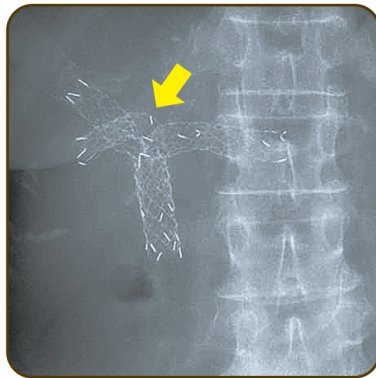


# LCD™ Biliary stent



2 stents insertion



3 stents insertion

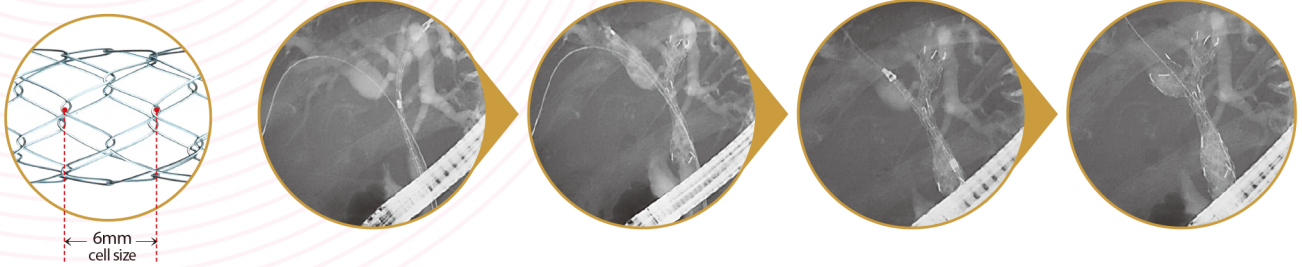
*"Modified LCD achieved a high technical success rate both in the initial stent-in-stent placement and in bilateral reinterventions in patients with malignant hilar biliary obstruction."*

[Digestive Endoscopy  
© 2013 JAPAN GASTROENTEROLOGICAL ENDOSCOPY SOCIETY]

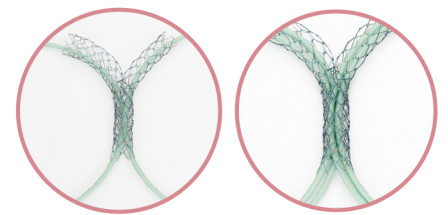
# Taewoong Niti-S™ LCD™ Biliary stent for Hilar Obstruction

## ● Feature

- **Unfixed large cell (each cell size : 6mm) with weaving construction**
- **Easy positioning of the second stent** : The large cell size design of LCD™ enables to position the second stent conveniently



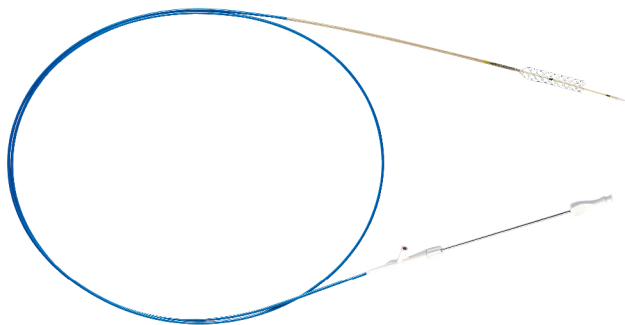
- **Simple and easy reintervention** : Reintervention through the large cell is easily performed, even after bilateral stent placement
- **Low axial force and optimal radial force** : Improve patients comfort and adapt to hilar biliary anatomy



Plastic stents can be inserted easily through the interstices

- **Radiopaque marker** : 3(three) at both ends & 2(two) in the middle

- **High trackability and deliverability with low profile introducer system (8Fr)**



**"In conclusion, LCD with its large and uniform cells and high RF achieved a high technical success rate both in the initial stent-in-stent placement and in bilateral reinterventions in patients with malignant hilar biliary obstruction."**

- Digestive Endoscopy@2013 Japan Gastroenterologic Endoscopy Society

## ● Ordering Information

Endoscopic Approach					Percutaneous Approach					
Code	Stent		Delivery		Code	Stent		Delivery		
	Diameter (mm)	Length (cm)	Profile (Fr)	Usable Length (cm)		Diameter (mm)	Length (cm)	Profile (Fr)	Usable Length (cm)	
BLD0604	6	4	8	180	TLD0604	6	4	8	50	
BLD0605		5			TLD0605		5			
BLD0606		6			TLD0606		6			
BLD0607		7			TLD0607		7			
BLD0608		8			TLD0608		8			
BLD0609		9			TLD0609		9			
BLD0610		10			TLD0610		10			
BLD0804		8			4		TLD0804			4
BLD0805					5		TLD0805			5
BLD0806					6		TLD0806			6
BLD0807	7		TLD0807	7						
BLD0808	8		TLD0808	8						
BLD0809	9		TLD0809	9						
BLD0810	10		TLD0810	10						
BLD0812	12		TLD0812	12						
BLD1004	10		4	TLD1004	4					
BLD1005			5	TLD1005	5					
BLD1006		6	TLD1006	6						
BLD1007		7	TLD1007	7						
BLD1008		8	TLD1008	8						
BLD1009		9	TLD1009	9						
BLD1010		10	TLD1010	10						
BLD1012		12	TLD1012	12						

## Released Articles

- \* **High single-session success rate of endoscopic bilateral stent-in-stent placement with modified large cell Niti-S stents for malignant hilar biliary obstruction**  
Digestive Endoscopy 2013, Doi: 10.1111/den.12055 Hirofumi Kogure et al.
- \* **Comparison of axial force and cell width of self-expandable metallic stents: which type of stent is better suited for hilar biliary strictures?**  
J Hepatobiliary Pancreat Sci(2011) 18: 646-652 Tsuyoshi Mukai et al.
- \* **Newly designed large cell Niti-S stent for malignant hilar biliary obstruction: a pilot study**  
Surg Endosc DO110.1007/soo464-010-1194-8 Hirofumi Kogure

